

# HIGH SIERRA SHOWDOWN

UP-TO-DATE 2018 EVENT INFORMATION FROM THE NEVADA INTERSCHOLASTIC CYCLING LEAGUE



## Race Description

Third in the Nevada League series takes us south to Mammoth Lakes, CA. New for 2018, we're moving a little higher up on the mountain! With the park closing the weekend before we're taking full opportunity of the Uptown / Downtown trail system for this year's event. At an altitude of more than 8,000 feet, the winding trails, crisp air and spectacular views of the surrounding Sierra will make for a very memorable weekend. Both middle and high school student athletes will navigate the same 4.3 mile course with 350 of climbing per lap. A GPX file can be found on the Nevada League website.

## Pre-Ride

All racers can pre-ride and inspect Saturday afternoon (2:00PM-5:00PM) and Sunday morning (8:00AM-9:00AM). We recommend all riders pre-ride the course. Please pass course workers with great care.

## Infield PitZone Info and Rules

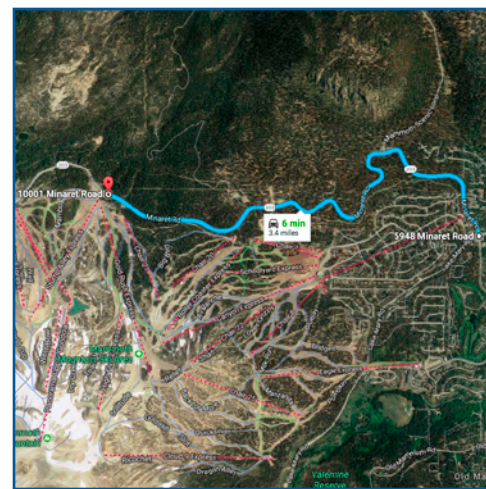
- Infield PitZone will have your team's area pre-marked and is open to vehicles for unloading/loading only.
- No open fires or generators allowed.
- No dogs off leash.
- Please be considerate of our venue and use the trash receptacles where provided. Pack out what you pack in.
- No smoking.
- No inappropriate language.
- Conflicts and/or disputes with any race official or volunteer shall not be addressed in the PitZone.
- Any violation of the above rules may result in a team penalty and/or expulsion from the PitZone and Infield area.

## Race Day Support

We are working to get a local shop to provide mechanical services but come prepared just in case you need a last minute adjustment or repair.

## Volunteering at Our Events

Volunteers make our events possible. If you'd like to volunteer for Nevada League events, or any of our other races, please visit the Nevada League website at [Nevadamb.org](http://Nevadamb.org) and go to the Volunteer section for a listing of volunteer positions.



## LOCATION

Mammoth Mountain - Mill Lodge  
Mammoth Lakes, CA 96145

## DIRECTIONS

### FROM MAMMOTH LAKES

- Head up Minaret Rd. 3.4 miles toward Mammoth Mountain Main Lodge. Look for event signs.

## PARKING

Parking will be located at the Mill Lodge parking lot along Minaret Dr. When entering the venue, you will be greeted by our parking volunteer. They will direct you into the parking areas and make sure that everyone gets parked according to the staging lay out.

**Online Registration Closes  
Wednesday 12pm Midnight  
September 26th**

## 2016 RACING FEES

	HIGH SCHOOL	MIDDLE SCHOOL	LATE FEE AT RACE
League Registration Fee	\$80	\$70	\$10*
Race Fee (per race)	\$40	\$30	\$10*

\*Online registration ends at midnight on Wednesday the week before a race. \*A late fee will be charged for day-of and new registrations.

## RACE CATEGORIES AND WAVE START TIMES

WAVE 1 (HIGH SCHOOL GIRLS)		START TIME	LAPS TOTAL	MILEAGE
Varsity Girls	1-49	9:33am	4	16 miles
JV Girls	100	9:33am	3	12 miles
Sophomore Girls	400s	9:36am	3	12 miles
Freshman Girls	700s	9:39am	3	12 miles
WAVE 2 (MS BOYS & GIRLS)		START TIME	TOTAL LAPS	MILEAGE
MS Boys Advanced	1000s	11:30pm	2	8 miles
MS Boys	2000s	11:33pm	1	4 miles
MS Girls Advanced	3000s	11:36pm	2	8 miles
MS Girls	4000s	11:39pm	1	4 miles
WAVE 3 (HIGH SCHOOL BOYS)		START TIME	LAPS TOTAL	MILEAGE
Varsity Boys	50-99	12:30pm	5	20 miles
JV Boys	300s	12:33pm	4	16 miles
Sophomore Boys	500s	12:36pm	3	12 miles
Freshman Boys	800s	12:39pm	3	12 miles

- Final lap count, distance and finish early time decisions per category will be finalized and confirmed at the start of each race.
- All categories stage 15 minutes prior to start time. Race start times subject to change.

## Event Timing

All racers will receive a permanent number plate at their first event. Racers will need to use this plate for all 4 races, so please remove this number plate before mounting the bike on a roof rack to prevent loss. Replacement number plates will be available at the registration tent for \$20.

In order to participate, you need to meet **"RACE READY"** status.

HERE'S THE RACE READY CHECKLIST:

- Pit Zone information entered
- League Fee and Race Fee paid
- Release forms completed electronically in the Pit Zone (once per season)

## Registration & League Payment

The Nevada Interscholastic Cycling League recommends avoiding long lines and taking advantage of early online registration. Riders registering "day of" at the race venue must register at least one hour before race starts. On-site race registration will be open 8:00am-10:30am on Sunday. Questions about race registration should be directed to [registration@Nevadamtb.org](mailto:registration@Nevadamtb.org).

On-site registration will result in a late fee of \$10 for Nevada League registration and a \$10 late fee for race registration. All racers must register at least one hour prior to their start time. To make race day more enjoyable, register in advance online using the Pit Zone.

## Petitions for Category Placement

Petitioning of category placement is closed for the remainder of the season.

## Other Important Notes

- Spectator viewing will be available at different locations
- No dogs off leash
- Please be considerate of our venue and use the trash receptacles whenever possible. Pack out what you pack in
- Series awards after events about 3:00 for individual and teams

## NICA Lodging Discount

Participants and Families receive 20% off a stay at one of three Mammoth Lodging Collection properties - Juniper Springs Resort, The Village Lodge or Mammoth Mountain Inn. Offer valid for stays from September 23 to September 27, 2016. Call 800.MAMMOTH and mention National Interscholastic Cycling Association for rates or to book.

## Event Contacts

### Race Director

Doug Bedient  
doug@Nevadamtb.org

### Race Operations

Kevin Joell

### Chief of Scoring

Jim Kelley  
cos@Nevadamtb.org

### Volunteer Coordinator

Lois Bedient  
volunteer@Nevadamtb.org

### Registration Questions?

registration@Nevadamtb.org

## Nevada Interscholastic Cycling League Weather Policy

Our primary consideration is the safety of racers, race support staff, race visitors, and potential damage to the race course site.

Any decisions regarding canceling, postponing, or altering race start times, lap lengths, number of laps, etc. will be made jointly by the Nevada League director, the land manager, and the Nevada League chief referee.

Please review our complete weather policy at -  
<http://www.nevadamtb.org/event/weather-policy/>

